

**Topic Card 8**

**Directions:**

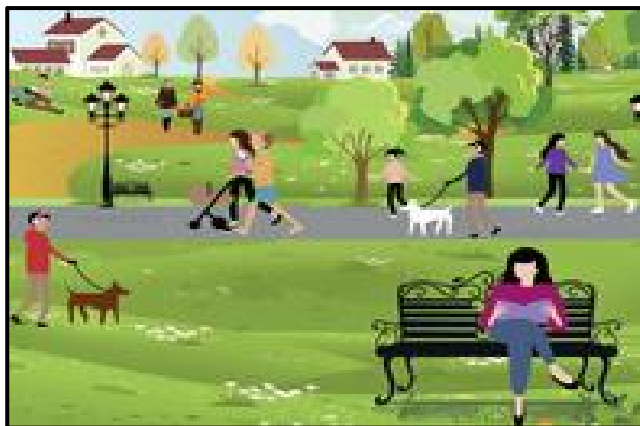
Please read the passage silently for 20 seconds. Then, read the passage aloud starting from the title.

**Morning at the Park**

These days, more and more people have started to spend their early mornings at the park. People go to the park to do some exercise or get some fresh air before they go to school or work. In some places, they have community clubs that organize daily morning activities for people.

**Please look at the people in Picture A. They are doing different things. Tell me as much as you can about what they are doing.**

**A**



**B**



A woman is \_\_\_\_\_  
A man is \_\_\_\_\_  
A woman is \_\_\_\_\_  
A woman is \_\_\_\_\_  
etc...

**Now, look at Picture B. Please describe the situation.**

---

---

---